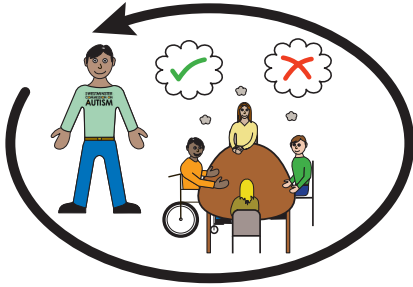




Terms of Reference

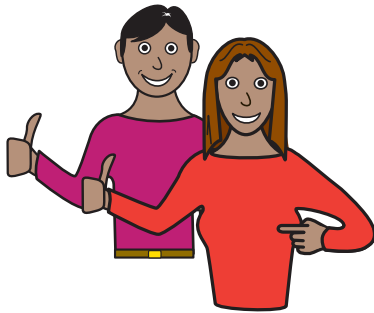
THE WESTMINSTER
COMMISSION ON
AUTISM



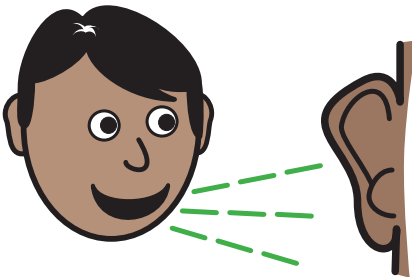
The Westminster Commission on Autism has been started.



We will meet regularly in the Houses of Parliament.



We want to help people work together to improve the quality of life for autistic people.

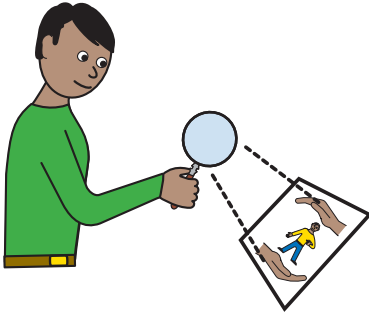


We will listen to autistic people and their families/advocates.

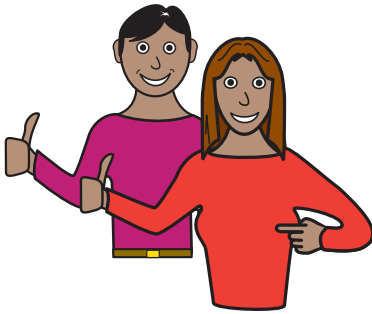




We will tell people what we have found out so that things will change for autistic people.



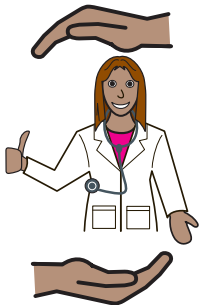
We will do short pieces of work finding out about different things that might make a difference to the lives of autistic people.



We want everything we do to improve quality of life for autistic people.



We know that good healthcare is important.

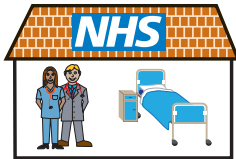
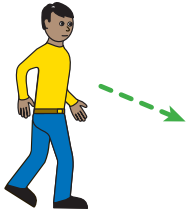


First of all we are going to look at how to make healthcare better for autistic people.





We will be asking these questions



1. What problems do autistic people have going to the doctor or hospital?



2. What would help to make it easier for autistic people to go to the doctor or hospital?

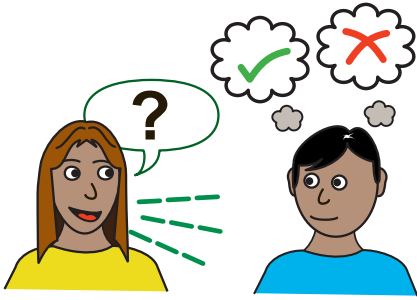


3. Do doctors and nurses and other healthcare staff understand autism?

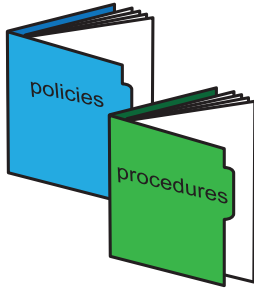


4. How could we help to make sure doctors, nurses and other healthcare staff understand autism?

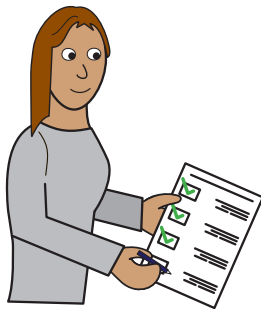




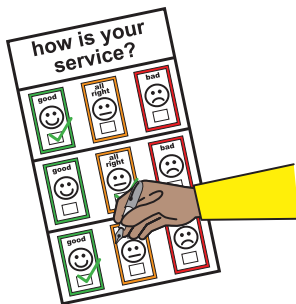
5. What can be done to help autistic people understand health issues and how to get better healthcare support?



6. Are doctors, nurses and other healthcare professionals following guidelines and policies that are in place already to help autistic people to get better healthcare?



7. How should we check that doctors and hospitals are doing a good job for autistic people?



We will be asking people with autism, and their families to tell us about their experiences.



We will also be asking organisations that provide support for autistic people as well as doctors, nurses and other healthcare professionals.





We will then write a report to tell the Government and health and social care services what we have found out.

thank you



Thanks to



easy on the



for the use of their image bank © LYPFT
www.easyonthei.nhs.uk